



# QuickShot™

## QUICK GUIDE



### WARNING



Read Owner's Manual (3A9301) for complete instructions and warnings. This quick guide is not a substitute for reading and understanding all instruction manuals and warning labels supplied with the equipment. Manuals are available at [graco.com](http://graco.com)



Follow pressure relief procedure and wear protective equipment including but not limited to protective eye wear.



**SKIN INJECTION HAZARD:** Keep clear of spray tip and leaks. Engage trigger lock when not spraying.



**FIRE AND EXPLOSION HAZARD:** Use only non-flammable or water-based materials. Follow fire and explosion warnings as listed in your manual.

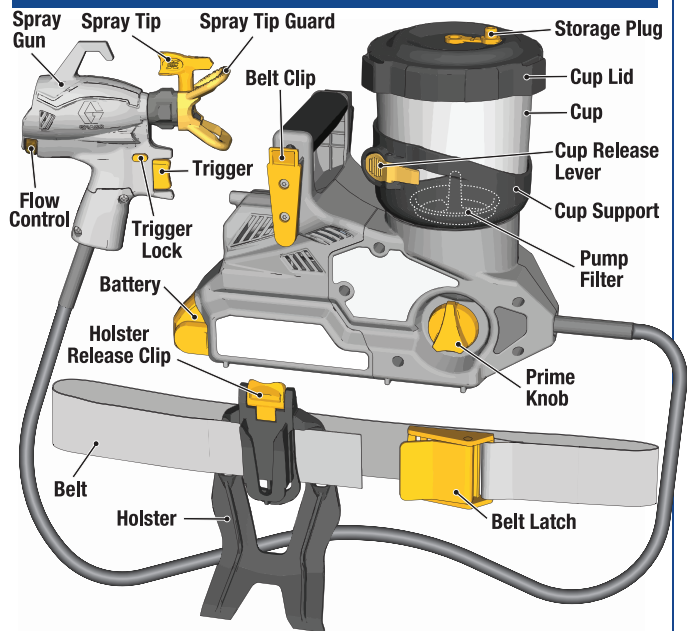


**FAILURE TO FOLLOW ALL WARNINGS CAN RESULT IN SERIOUS INJURY, AMPUTATION, OR DEATH.**



Instructions in Quick Guide are for water-based paints only. See Owner's Manual for instructions for use with Oil-Based or Flammable materials.

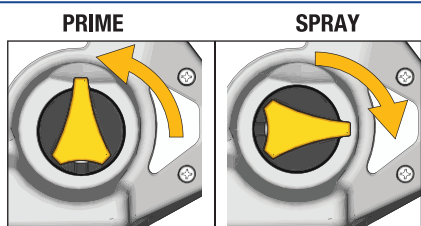
## KNOW YOUR SPRAYER



### Prime Knob

Turn Prime knob up to PRIME position to relieve system pressure.

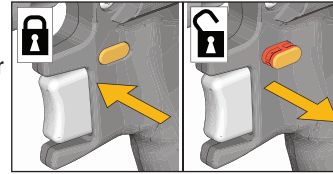
Turn Prime Knob forward to SPRAY position to spray fluid.



## Sprayer Setup

### 1 Engage Trigger lock.

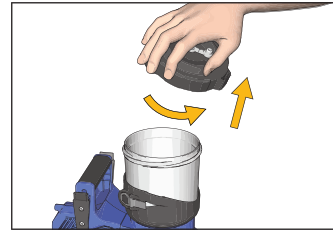
- No visible red showing on trigger lock is the locked position.
- Always engage trigger lock when not spraying.



### 2 Turn Prime Knob up to PRIME position.

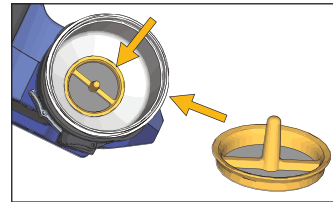


### 3 Remove the cup lid from the cup.



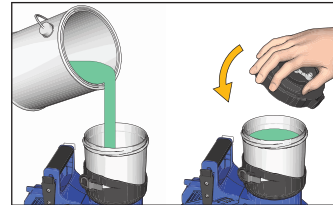
### 4 Verify a clean pump filter is installed in the bottom of the cup at the pump inlet.

- A dirty or plugged pump filter will result in poor sprayer operation or loss of prime.

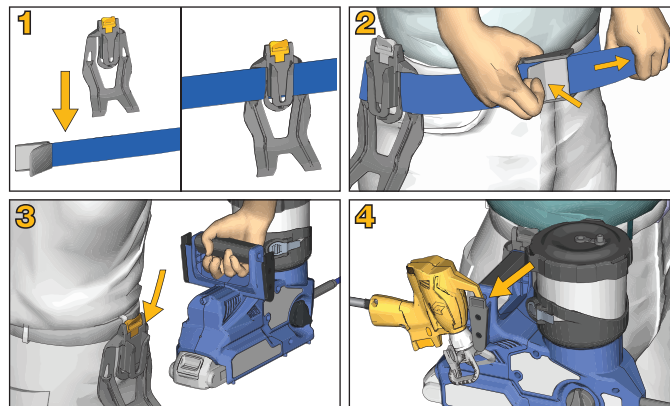


### 5 Fill cup with paint and reinstall Cup Lid.

- Instructions in Quick Guide are for water-based paints only.
- See owners manual for instructions for use of Oil-Based or Flammable materials.

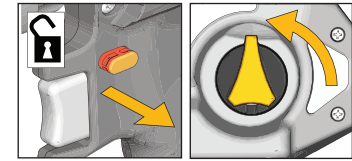


## Belt Setup

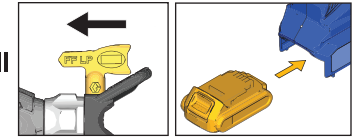


## Start Up

### 1 Disengage Trigger Lock and verify Prime Valve Knob is in the PRIME position.



### 2 Turn the Spray Tip to the UNCLOG position and Install a fully charged battery.



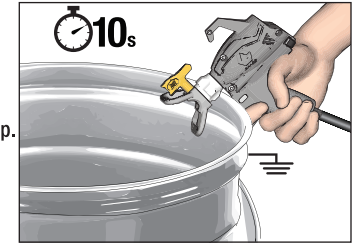
### 3 Verify Storage Plug is OPEN.

- Storage plug must be open during spraying to avoid an air lock in the cup and loss of prime.

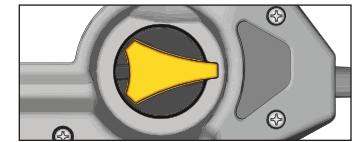


### 4 To prime the pump, point the gun into a waste pail and pull the trigger for 10 seconds.

- This will purge air from the pump.
- The electronic gun is always open when the trigger is pulled, so a small amount of fluid may spray out while priming.

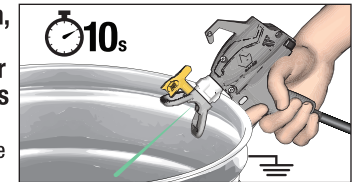


### 5 Turn the Prime Valve knob forward to the SPRAY position.

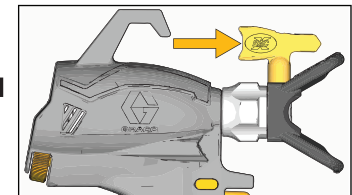


### 6 To prime the hose and gun, point the gun into a waste pail and pull the trigger for 10 seconds or until there is a steady stream of paint.

- This will purge all air (and storage fluid) from the hose and gun.



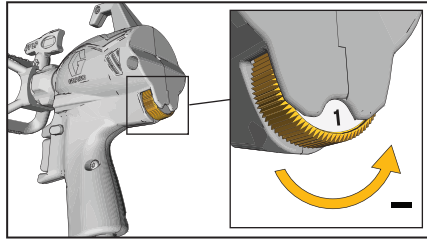
### 7 Turn the Spray Tip forward to the SPRAY position.



NOTE: To avoid pump damage, if gun does not spray after 10 seconds STOP and repeat STARTUP.

**You are now ready to spray!**

## Spray

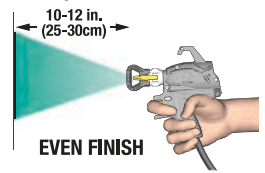


**1** Set Flow Control to setting #1 (lowest setting).

**2** Pointing at a piece of scrap cardboard, pull the Trigger to test the spray pattern. Adjust the following to achieve desired spray pattern:

- Speed Control
- Distance from surface
- Hand Speed
- Spray Tip Orientation

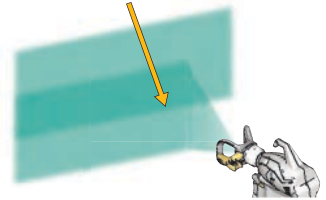
**Good Spray Pattern**  
10-12 inches (25-30 cm.) parallel from surface



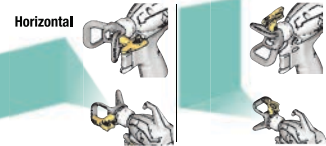
**TAILS - Gaps at edges**  
Pressure too low  
Tip Wear



**Aim gun here to overlap stroke by 50%**

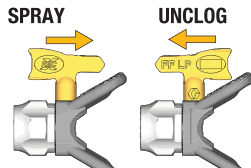


**Spray Tip Orientation**



## Clear Tip Clogs

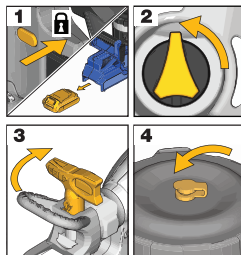
If you encounter a Spray Tip clog, Reverse the Spray Tip and spray into a waste area to remove the clog. Return the Spray Tip to spray position to spray. See Owners Manual.



## Pause in Spraying

Paint will dry quickly and cause clogs in the sprayer. Follow these steps whenever you pause spraying for 5 minutes to 2 hours.

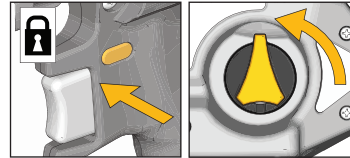
- Engage Trigger Lock and remove Battery from sprayer.
- Turn Prime Knob up to PRIME position to relieve system pressure.
- Turn Spray Tip 90 degrees to seal orifice from drying out.
- Close Storage Plug in Cup Lid to seal material in Cup.



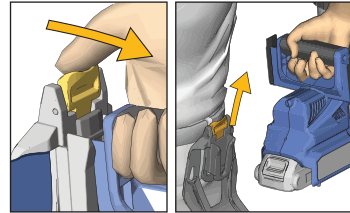
## Cup Refills

Cup refills can be performed while wearing the sprayer on the Belt or after removing the sprayer from the Belt and setting it on a flat surface.

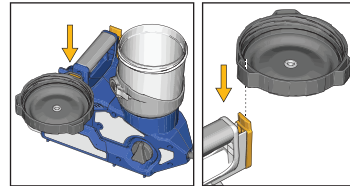
**1** Engage Trigger Lock and Turn the Prime Valve Knob up to PRIME position to relieve system pressure.



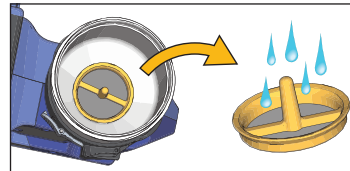
**2** If desired, remove Sprayer from the Tool Belt by pressing the Holster Release Clip and pulling up on the Sprayer.



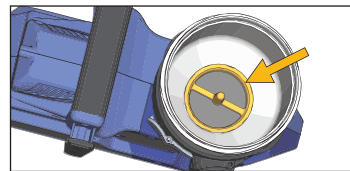
**3** Remove the cup lid from the cup.  
• The cup lid can hook onto sprayer as shown while refilling cup.



**4** Remove the Pump Filter and clean debris from the filter screen.



**5** Reinstall the Pump Filter in the bottom of the cup.



**6** Refill the cup with paint and reinstall Cup Lid. Follow STARTUP instructions to proceed.

## Cleanup and Storage

**1** Engage Trigger Lock and turn Prime Knob up to PRIME position to relieve system pressure.

**2** Remove sprayer from Tool Belt. Remove Cup Lid from Cup and pour extra paint back into paint can.

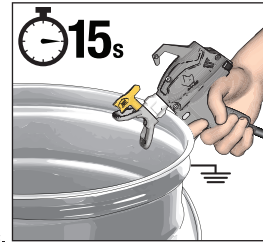
**3** Remove Pump Filter from cup and set aside for cleaning.



## Cleanup and Storage continued

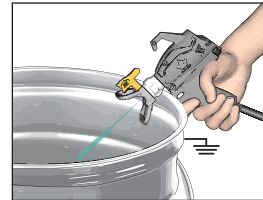
**4** Circulate Cleaning Fluid:

- Fill cup half-full of water
- Reinstall Cup Lid
- Verify Storage Plug is open
- Verify Prime Knob is pointed up to PRIME position and turn Spray Tip to UNCLOG position.
- Disengage Trigger Lock and turn Flow Control to 10. Point Spray Gun into a waste pail and trigger for 15sec.



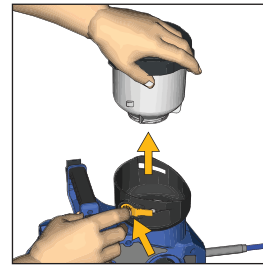
**5** Spray Cleaning Fluid:

- Turn Prime Knob forward to SPRAY position and verify Spray Tip is in the UNCLOG position.
- Point Spray Gun into a waste pail and trigger until cleaning fluid is emptied from the Cup.



**6** Clean Cup:

- Verify cup is empty and remove cup from sprayer by depressing the Cup Release Lever and rotating Cup out of Cup Support.
- Clean Cup, Cup Lid, and Pump Filter in warm water.
- Wipe out Cup Support with wet rag and reinstall Cup, Pump Filter and Cup Support.



**7** Repeat steps 4 and 5 as needed until clean.

**8** Storage:

- Circulate and spray a small amount of Pump Armor Storage Fluid.
- Engage Trigger Lock
- Turn Prime Knob to PRIME position.
- Remove Battery, Spray Tip and Spray Tip Guard.
- Clean Spray Tip and Spray Tip Guard with warm water and a old tooth brush and reinstall onto gun.
- Turn Spray Tip 90 degrees for storage and CLOSE Storage Plug on Cup Lid.

